



(Manufacturer of Earthing Products)

An ISO Certified Company



BLC POWER SOLUTION PVT. LTD.

EARTHING | LIGHTING | MANUFACTURING

www.blcpowersolution.com

ABOUT US

We manufacture earthing electrodes of the best standard, Copper-Bonded Strips, Lightning Arrestors, Earth Pit Covers, and Chemical bags.

To serve our customers with the best Earthing products and solutions, we provide a wide variety of products and solutions.

Our core technical staff has a wealth of industry knowledge and can manage any problem with the best customer satisfaction.

We are a Jaipur-based company that was established by Surendra Singh Lora & Bhanwar Lal Choudhary and specializes in the production of electrical safety equipment.

Message From **DIRECTOR**

Dear Team,

I hope this message finds you well and filled with the same enthusiasm that has driven our success so far. As we navigate the dynamic landscape of the manufacturing industry, it's imperative for us to reinforce our commitment to excellence and innovation.

I am thrilled to address you today as we continue our journey of manufacturing top-notch earthing solutions, particularly our flagship products: Copper-Bonded Strips, Lightning Arrestors, Earth Pit Covers, and Chemical Bags.

Our Team - Our Greatest Asset: I want to take a moment to express my gratitude to each member of the [Company] family. Your dedication, expertise, and passion for excellence are the driving forces behind our success. Together, we are not just manufacturing products; we are shaping the future of the industry.

Looking Ahead: As we move forward, let us continue to embrace innovation, uphold the highest standards of quality, and exceed the expectations of our clients. By doing so, we not only solidify our position in the market but also contribute to the safety and success of those who rely on our products. Thank you for your unwavering commitment to excellence. Together, let's continue to elevate to new heights of success.

LIGHTNING ARRESTER



Lightning arresters are used to protect electric fences. Electric fences are safeguarded by lightning arresters. They are made up of a series inductor and a spark gap. Lightning arresters are often located close to a vital doorway or appliance, such as electrical panels and generators. The arrester is activated when a lightning strike occurs and directs the lightning to the earth, where it disperses harmlessly.

| Model | Protection Radius l3(m) | Protection Radius l2(m) | Protection Radius l1(m) |
|-----------|----------------------------|----------------------------|----------------------------|
| BLC-35LA | 35 | 28 | 15 |
| BLC-45LA | 45 | 38 | 20 |
| BLC-55LA | 55 | 40 | 35 |
| BLC-80LA | 80 | 70 | 65 |
| BLC-100LA | 100 | 90 | 80 |
| BLC-150LA | 150 | 130 | 110 |

BLC ESE Lightning Terminal is exclusively suitable for high-rise-buildings, airports, naval bases, open areas, critical military zones, stadiums and highways.

| High Voltage Impulse Emitter | ION Generator Unit | Completely Autonomous |
|-------------------------------------|--|-------------------------------------|
| Testable with BLC Testers | 30% more efficient than passive system | Fully compatible with the standards |
| Electroatmospheric Capacitor-inside | 20 years manufacturer warranty | |



| Protection Level of "BLC Guard" | | | | |
|---------------------------------|----------------------|---------|---------|---------|
| Height (m) | Protection Radius(m) | | | |
| | Level 1 | Level 2 | Level 3 | Level 4 |
| 2 | 31 | 35 | 39 | 43 |
| 3 | 47 | 52 | 58 | 64 |
| 5 | 79 | 86 | 97 | 107 |
| 10 | 79 | 88 | 99 | 109 |
| 20 | 80 | 89 | 102 | 113 |

Copper Bonded Earthing Electrodes

Copper Coating is done on the low carbon steel pipe actual purpose of the copper coating is that copper increase the capacity to carry high current in short time and best corrosion resistance

Copper Bonded Earthing Electrode Technical Details:-

| Model Name | Electrode Diameter (MM) | Length (MM) | Terminal Conductor | Connection Terminal HoleDie (MM)x No. of Hole | Inner Strip | Type |
|------------|-------------------------|-------------|--------------------|---|-------------|------------|
| BLC48CB | 48 | 2000 | 32X06 | 10 X 02 | 25 X 03 | Cu. Bonded |
| | | 3000 | | | | |
| BLC48CB | 58 | 2000 | 40 X 06 | 12 X 02 | 25 X 03 | Cu. Bonded |
| | | 3000 | | | | |
| BLC58CB | 76 | 2000 | 50 X 06 | 12 X 02 | 32 X 03 | Cu. Bonded |
| | | 3000 | | | | |
| BLC58CB | 80 | 2000 | 50 X 06 | 12 X 02 | 32 X 03 | Cu. Bonded |
| | | 3000 | | | | |



Pure Copper Earthing Electrodes

The Pure copper chemical earthing electrodes are usually manufactured with high quality electrolytic copper, actual purpose for copper earthing as copper is super conductor of electricity and best for high current carrying ability.

Pure Copper Earthing Electrode Technical Details:-

| Model Name | Electrode Diameter (MM) | Length (MM) | Terminal Conductor | Connection Terminal HoleDie (MM)x No. of Hole | Inner Strip | Type |
|------------|-------------------------|-------------|--------------------|---|-------------|-------------|
| BLC48PC | 48 | 2000 | 32X06 | 10X02 | 25 X 03 | Pure Copper |
| | | 3000 | | | | |
| BLC58PC | 58 | 2000 | 40 X 06 | 10X02 | 25 X 03 | Pure Copper |
| | | 3000 | | | | |
| BLC76PC | 76 | 3000 | 50X06 | 12X02 | 32 X 03 | Pure Copper |
| BLC80PC | 80 | 3000 | 50X06 | 12X02 | 32 X 03 | Pure Copper |



GI-Earthing Electrodes



Zinc galvanization done on the low carbon steel pipe by hot dip galvanizing process. Zinc coating protect to electrode from rusting. It usually be required to carry quite a large current for a short period

| GI Earthing Electrode Technical Details :- | | | | | | |
|--|-------------------------|-------------|--------------------|---|-------------|------|
| Model Name | Electrode Diameter (MM) | Length (mm) | Terminal Conductor | Connection Terminal HoleDie (MM)x No. of Hole | Inner Strip | Type |
| BLC48GI | 48 | 2000 | 32 X 06 | 12 X 02 | 25 X 03 | GI |
| | | 3000 | | | | |
| BLC58GI | 58 | 2000 | 40 X 06 | 12 X 02 | 25 X 03 | GI |
| | | 3000 | | | | |
| BLC76GI | 76 | 3000 | 50 X 06 | 12 X 02 | 32 X 03 | GI |
| BLC80GI | 80 | 3000 | 40 X 06 | 12 X 02 | 32 X 03 | GI |



Copper Bonded Earthing Rod

Copper bonded Rod made as MS metal with copper earthing this combination make the ROD ideal for deep driving whilst also provide lasting resistance to corrosion.



| Copper Bonded Earthing Rod Technical Details:- | | | | | |
|--|-------------------------|-------------|--------------------|---|---------------|
| Model Name | Electrode Diameter (MM) | Length (mm) | Terminal Conductor | Connection Terminal HoleDie (MM)x No. of Hole | Type |
| BLC16CBR | 16 | 2000 | 50 X 06 | 10X04 | Copper Bonded |
| | | 3000 | | | |
| BLC17.2CBR | 17.2 | 2000 | 50X06 | 10X04 | Copper Bonded |
| | | 3000 | | | |
| BLC20CBR | 20 | 2000 | 50X06 | 12X02 | Copper Bonded |
| | | 3000 | | | |
| BLC25CBR | 25 | 2000 | 50X06 | 12X02 | Copper Bonded |
| | | 3000 | | | |
| BLC32CBR | 32 | 2000 | 50X06 | 12X02 | Copper Bonded |
| | | 3000 | | | |
| BLC38CBR | 38 | 2000 | 50X06 | 12X02 | Copper Bonded |
| | | 3000 | | | |

Lightning Arrester

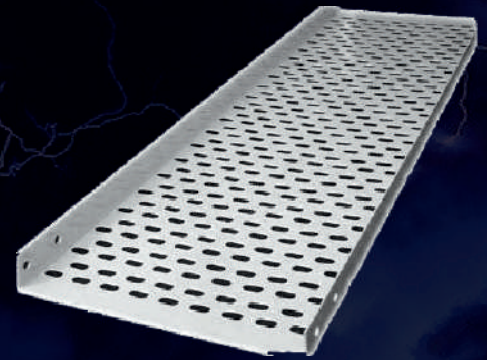
A lightning arrester is a device used to protect building power lines, electrical equipments, & Structures from the voltage surges caused by lightning strikes.

Lightning arrester create a passage for the surge voltage from lightning, to flow into the earth.



Cable Tray

Cable tray system is used to support insulated electrical cables used for power distribution, control & communication. They are specially useful in situations where changes to a wiring system are anticipated, since new cables can be installed by laying them in the tray, instead of pulling them through a pipe. Being transparent it makes its easier to identify, distribute & make a visual check of the network.



Back Fill Compound



- ➔ No need to add water overtime.
- ➔ Resistivity less than 0.2 ohm-meter.
- ➔ The soil moist for a longer period and lower ground resistance
- ➔ Graphite based having some more.
- ➔ Non toxic content
- ➔ Its maintain conductivity without continuous presence of water
- ➔ Tested from NABL accredited Lab.

| MODEL | WEIGHT (kg.) | RESISTIVITY (ohm) |
|-----------|--------------|-------------------|
| BLC-15BFC | 15 | <1 |
| BLC-25BFC | 25 | <1 |

Heavy Duty Earth Pit Chamber Cover

Earth pit cover installed for safe protection for earthing terminal and for earthing connection check and regular calculation of earth value.

Earth pit cover provides a safe as well as easy access for connection and disconnection and for routine testing of earthing



BLC SQUARE

300 (D) X 300 (H) X 275 (B)



BLC PEP

308 (D) X 308 (H) X 215 (B)



BLC MINI (7")

177 (D) X 230 (H) X 270 (B)

Benefits of Earthing

- ★ Earthing used to protect from any electric shock.
- ★ Helps in the flow of electric current directly inside the ground.
- ★ Keep the electric appliance safe from damage.
- ★ It protects building breakdown from the lightning.
- ★ Grounding is also a safety process that protects the entire power system from malfunctioning and is mainly used to balance the load when the electric system overloads

only used to
balance the load when the electric system overloads.

Copper Bonded Solid Earth Rod

- ➔ Copper coated rod as per standard.
- ➔ 100 to 250 micron thick copper coating.
- ➔ Highly conductive and anti corrosive.
- ➔ More than 15 years of durability.
- ➔ This electrode has high strength and provides low impedance.



| Model | ROD Diameter (mm) | Length (meter) | Copper Bonding |
|--------------|-------------------|----------------|-------------------|
| BLC-14.2/CBR | 14.2 mm | 1, 2 & 3 mtr | 100 to 250 micron |
| BLC-17.2/CBR | 17.2 mm | 1, 2 & 3 mtr | 100 to 250 micron |
| BLC-20/CBR | 20 mm | 1, 2 & 3 mtr | 100 to 250 micron |
| BLC-25/CBR | 25 mm | 1, 2 & 3 mtr | 100 to 250 micron |
| BLC-32/CBR | 32 mm | 1, 2 & 3 mtr | 100 to 250 micron |

TESTED FROM NABL & CPRI LAB.

Copper Bonded Chemical Earth Electrode



- ➔ Copper coated rod as per standard, long service life
- ➔ 100 to 250 micron thick copper coating.
- ➔ Inner flat electrode is copper coated
- ➔ More than 15 years of durability.
- ➔ Inner filled Crystalline conductive compound

| Model | ROD Diameter (mm) | Length (meter) | Copper Bonding |
|------------|-------------------|----------------|-------------------|
| BLC-48/CBP | 48 mm | 1, 2 & 3 mtr | 100 to 250 micron |
| BLC-76/CBP | 76 mm | 1, 2 & 3 mtr | 100 to 250 micron |

TESTED FROM NABL & CPRI LAB.

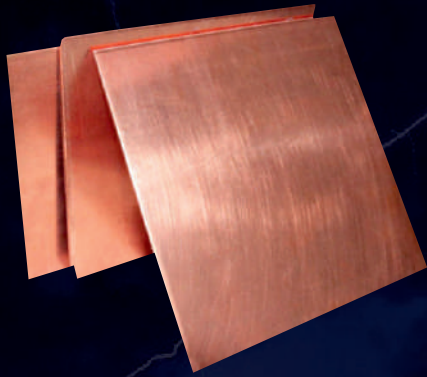
Galvanized Bonded Solid Earth Electrode

- ➔ Hot dip galvanized for corrosion protection.
- ➔ Moisture booster chemical bags provided for low earth resistance
- ➔ Designed for fast fault current dissipation
- ➔ Easy & Fast installation
- ➔ Most suitable for soil condition with PH value 5.0 & 8.0

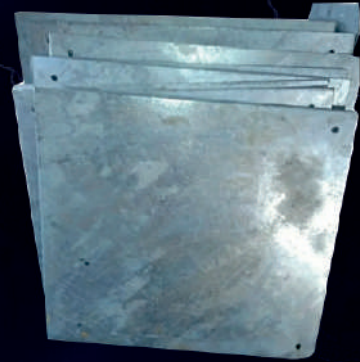
| Model | ROD Diameter (mm) | Length (meter) |
|------------|-------------------|----------------|
| BLC-48/GBP | 48 mm | 1, 2 & 3 mtr |
| BLC-58/GBP | 58 mm | 1, 2 & 3 mtr |
| BLC-76/GBP | 76 mm | 1, 2 & 3 mtr |

TESTED FROM NABL & CPRI LAB.

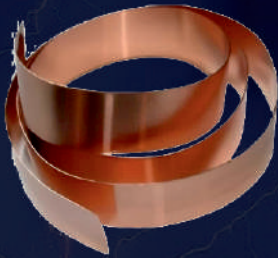




COPPER EARTHING PLATE



GI EARTHING PLATE



COPPER EARTHING STRIP



**HOT DIP GALVANIZED
GI EARTHING STRIP**



COPPER EARTHING WIRE



**HOT DIP GALVANIZED
GI EARTHING WIRE**

Industries Where We Give Our Services



Telecommunication

The main building grounding system protects against the effects of electrical hazards, lightning hazards, and electrostatic hazards in addition to telecommunication hazards.



Airports

Chemical Earthing and Lightning arresters, with more than Lakh installations and decades of flawless performance, has today acquired a notch above the IS & IEC standards.



Hotels & High Rise Building

Such Building and high rise structures must be prepared for the portable effects of lightning strikes and surges and to protect the people in them.



Industrial Area

The electrode is extensively used to safeguard people from dangers caused by a buildup in microwave antennas, telecommunication towers, residential places, and industrial locations.



Solar Panels

Solar earthing, also known as grounding, is a system that provides protection against electrical faults and lightning strikes.



Sports Complex

At a time, thousands of people gathering in a stadium needs a serious protection. Such a complex without a Lightning protection system may mean a loss of hundreds of people life.



Nuclear Plants

At High-risk facilities such as nuclear plants, having strict safety standards and rules has to be adhered to prevent severe consequences to the environment and people.



Highway, Toll Plaza, Tunnel

On regular basis thousands of Vehicles and millions of people passes through highway and toll for their safety Earthing, Lightning Protection System becomes must installed things for safety.

Our Prestigious Clients



Brand Certification & Approval





Get In Touch With us



info@blcpowersolution.com



www.blcpowersolution.com

